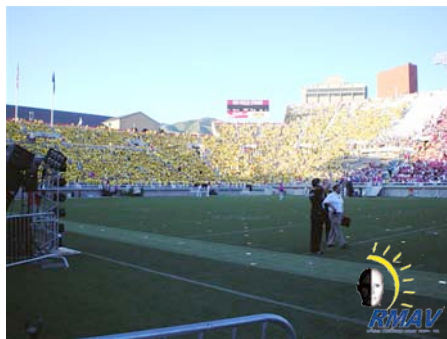




DAY OF CELEBRATION

Rice-Eccles Stadium
Salt Lake City, Utah
July 2005





LDS Dance Festival at the University of Utah

In July of 2005, The Church of Jesus Christ of Latter-Day Saints celebrated the 200th birthday of their founder Joseph Smith.

Rice-Eccles Stadium, the site of the opening and closing ceremonies of the 2002 Winter Olympics, was selected as the venue, and Rocky Mountain Audio Visual was asked to provide the sound and lighting for this demanding event.

The set up, rehearsal, and show took four days and was a great success, in spite of the 120 degree weather. The program consisted of 1,500 on-field dancers, a 10,000 voice choir, live performances with backing tracks, and concluded with a speech by the president of the church. At show time, the stadium was nearly filled to capacity with almost 45,000 people, and was the second largest event ever in this venue.

The dancers and choir were made up of youth from the Salt Lake City area. The dancing highlighted some of the different cultures found throughout the church and commemorated the life and legacy of Joseph Smith. It also included a full blackout with the only light coming from glow sticks. Activities also included Polynesian drummers and complicated audience interaction involving colored scarves. Audience members were asked to follow a set of instructions resulting in patterns and words throughout the entire stadium. Audio clarity was crucial to the success of this complicated set of activities.



SOUND SYSTEM ON THE FIELD

Due to the large number of performers and audience, an extensive sound reinforcement and monitoring system was implemented.

SPEAKERS

- 32- JBL Vertec VT4889
- 12- JBL Vertec VT4888
- 10- JBL HLA 4895
- 8- JBL HLA 4897 Subs
- 4- JBL EON15G2
- 8- JBL EON10G2
- 4- McCauley SM950 Wedges

AMPLIFICATION

- 38- Crown MacroTech
- 8- Crown ITech 6000

PROCESSING/

TIME ALIGNMENT

- 2- DBX 480 Driverack
- 2- DBX 481 Driverack
- 1- JBL DSC 260

CONSOLE

Soundcraft Series 5

WIRELESS MICS

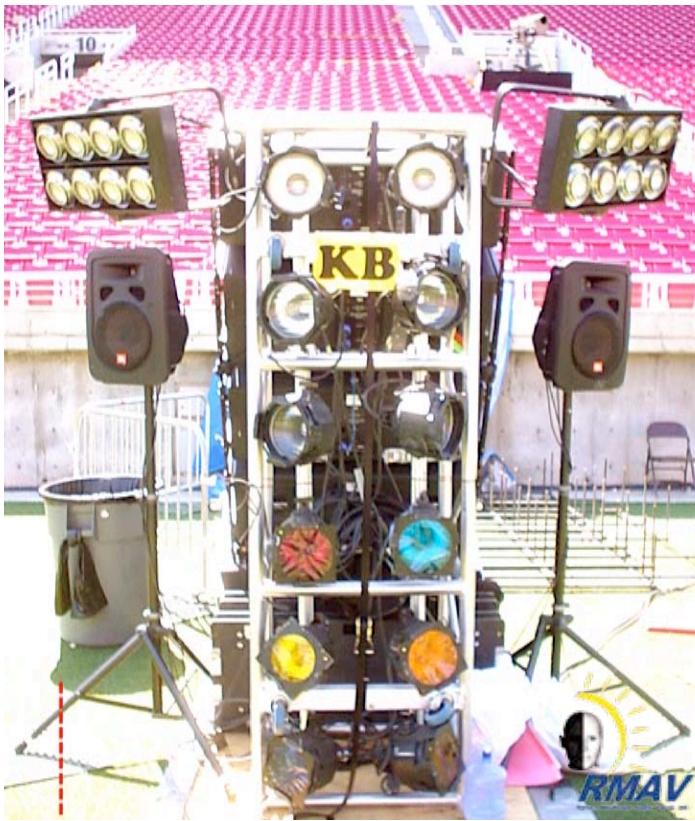
- 12- Shure UHF series

IN EAR MONITOR SYSTEMS

- 8- Sennheiser ew300
- 8- Shure PSM600

Audio Engineers: (Pictured)
Bryce Stettler, Chris Curtis,
John Phillips, Michael Hicks





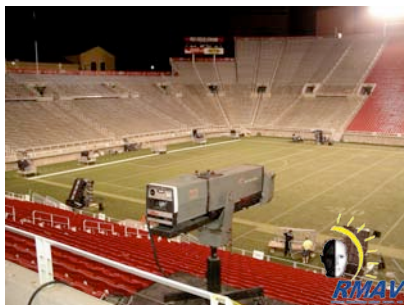
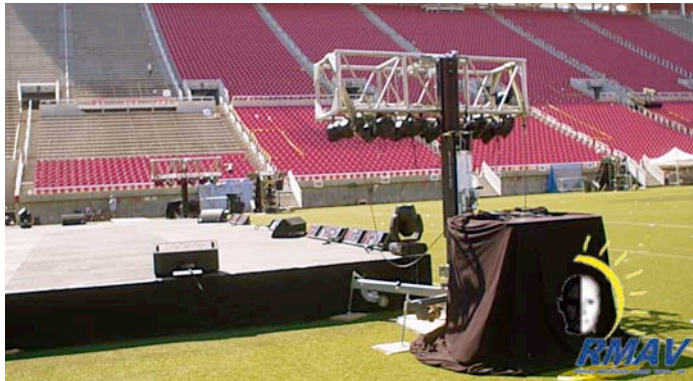
CREATIVE LIGHTING SOLUTION ON THE FIELD

The lighting for this event required a creative solution because of budget and sight line considerations. Our solution to these problems was to use one eight foot stick of pre rig double hung truss on end at each speaker location which served two purposes. One was to provide enough light to accent the dancers, who covered the entire field, and the second was to support the extreme angle of the speaker arrays behind it. The height of the truss was perfect, allowing for the light needed without additional sight line obstruction.

There were eight lighting locations around the field. Each location consisted of twelve ETC Source Four pars and two eight lights. The total instrument count for the field was ninety four pars and sixteen eight lights. Eight Super Trooper spot lights were used for highlighting the choir, featured performers, and dancers.

Stage lighting was also a challenge because of the lack of a roof structure due to the requirements of the program. Stage lighting consisted of eighty four par lights and eight Martin Mac 600's.

Lighting technicians on this job were Brent Karlberg, Rod Elwood, Josh Nelson, Marlin Stancliffe, and Hammond Chamberlain.



AUDIENCE SHOT FROM THE FIELD

To help supplement the field lighting, eight Super Trooper spot lights were used.



RMAV CREW

Michael Nelson, Marlin Stancliffe, Brent Karlberg, Jared Tolley, Josh Nelson, John Phillips, Mike Hyde, Bryce Stettler, Ben Robertson, Hammond Chamberlain, Nick Randall, Chris Curtis, Rod Elwood, Stuart Watson, Michael Hicks



STAGE VIEW FROM BLEACHERS

Pre show picture of the empty stadium. Visible are the Vertec stacks and stage.